

## Test Case-36

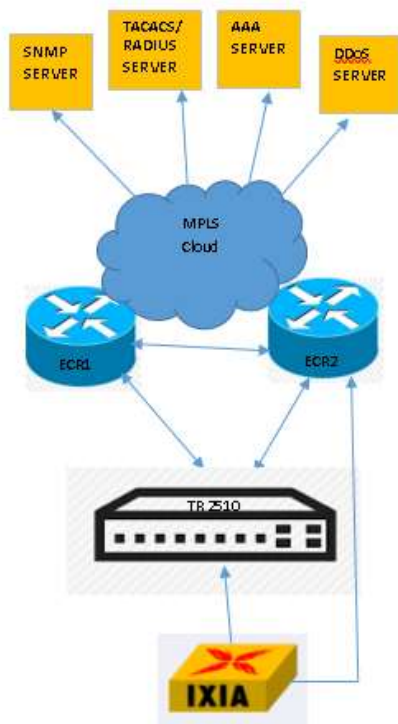
**Test Name:** RJIL-IP-QA-DS-SYS-037

**Test Objective:** To check support of at least one level of password protection feature.

**Test Configuration:**

Service password-encryption

**Test Set up (Including Pre requisites):** Switch , ECR1,ECR2



**Procedure:** Connect Switch to the ECR1, ECR2

**Action:**

**Response:**

|  |                                      |          |  |
|--|--------------------------------------|----------|--|
| <b>1</b>   | Command: service password encryption | <b>1</b> | Switch supports for one level password protection by encryption. |
| <b>Expected Result:</b> Switch supports for one level password protection by encryption.   |                                      |          |  |
| <b>Actual Result:</b><br><b>Current configuration:</b><br><b>config#service password-encryption</b><br><b>!</b><br><b>GUICHECK#Show run</b><br><b>username admin password 7 052F304A403F</b><br><b>GUICHECK#GUICHECK_config#show ver</b><br><b>GUICHECK_config</b> |                                      |          |  |